



# FACT SHEET

## Therapy Management Software MiniMed Paradigm<sup>®</sup> REAL-Time System

The diabetes therapy management software gives you valuable insights about your glucose control, which enables you to easily share information with your clinician to help make decisions about your treatment as effective as possible.

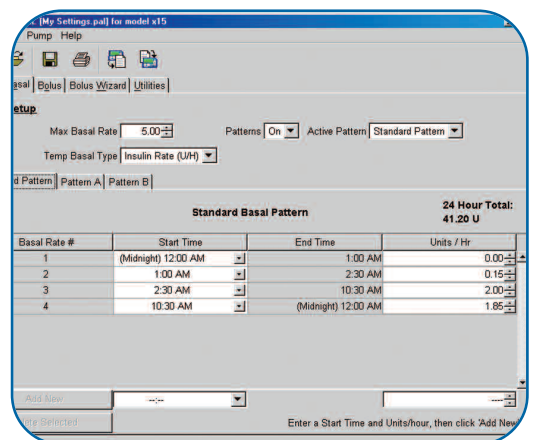
**The ParadigmPAL™ 3.0 Software** is a PC-based application that enables you to view, modify, backup, and reprogram your insulin pump settings through your computer.

Use the therapy management software to get easy access to information that shows the impact of your daily activities, including the effect of insulin and key actions, on glucose control. Then use this information to help you and your healthcare provider tailor your treatment precisely to meet your individual needs.

### ParadigmPAL™ 3.0 Software

Using your personal computer—review, modify, reprogram, and back-up your insulin pump settings

- ParadigmPAL 3.0 Software gives you the power to manage, save, and print your MiniMed Paradigm insulin pump settings:
  - Basal rates and patterns
  - Insulin action curves
  - Bolus delivery options
  - Blood glucose target ranges
  - Bolus Wizard<sup>®</sup> calculator settings
  - Save and restore settings
  - Alerts, alarms, and reminders
  - Clocks and other utilities
- Upload changed settings to your insulin pump from your computer.
- Saving new settings to your computer ensures you always have a backup and an easy way to print settings for review with your healthcare provider.



Review, modify, reprogram, and backup your insulin pump settings using your personal computer. Then upload them to your MiniMed Paradigm insulin pump.

Please visit [www.minimed.com/precautions/pump](http://www.minimed.com/precautions/pump) for complete safety information.

Paradigm and Bolus Wizard are registered trademarks of Medtronic MiniMed, Inc.

ParadigmPAL is a trademark of Medtronic MiniMed, Inc.

Medtronic Australasia Pty Ltd  
Diabetes Division  
97 Waterloo Road  
North Ryde NSW 2113 Australia  
Phone: (02) 9857 9000 Fax: (02) 9887 1829  
Toll Free: 1800 668 670  
[www.medtronic-diabetes.com.au](http://www.medtronic-diabetes.com.au)

You should always seek advice from your medical practitioner to determine your suitability for insulin pump therapy.

©2007 Medtronic MiniMed, Inc. All rights reserved. 010407

